

# RSB Membership Guide



**RSB members are innovators and pioneers on a journey towards a bio-based and circular economy.**

From growers and producers of next-generation fuels and materials to the end-users, blenders and investors of these products, from non-profit social organisations to non-governmental environmental organisations, and from high-level public policy institutions to academia and research institutions.

They are lighting the way for a global sustainability movement.

**RSB membership offers a platform for leaders to activate their ambition for the just and sustainable transition to a bio-based and circular world.**

# Why choose RSB membership?



As a RSB member, you will have exclusive access to RSB platforms and initiatives, webinars and events, and knowledge-building opportunities for your entire team. You will benefit from association with the world's most trusted and credible sustainability standard for the bio-based and circular economy, and have direct input into the continued development of the RSB Standard.

## Other key benefits:

-  Develop capacity, knowledge, and skills in the sustainable bio-based and circular economy.
-  Attend RSB's annual calendar of webinars and global events for free.
-  Align your sustainability ambition with the leading sustainability foundation for the bio-based and circular economy across a holistic framework of climate, environmental and social issues.
-  Demonstrate your commitment to sustainability.
-  Shape the development of the world's most trusted sustainability framework for the bio-based and circular economy.
-  Take part in cutting edge discussions via RSB's member-exclusive platforms and initiatives.
-  Gain priority access to RSB's projects and programmes, participating in the development of new initiatives.
-  Expand your network, engaging and collaborating with leaders and pioneers across sectors.

## What do our members say?



"The Roundtable on Sustainable Biomaterial's (RSB) rigorous sustainability criteria are the reason we have chosen to work with them in South Africa, to ensure that the development of aviation biofuel feedstocks safeguards against potential impacts on the environment and provides maximum community benefits."

– **James Reeler, Land and Climate Change Specialist, WWF South Africa**



"Procter & Gamble is very pleased to become a member of the RSB. As a company, our long-term vision is to use 100% renewable or recycled materials for our products and packaging. As we move to replace petroleum-based materials with renewable ones, sustainable sourcing will be key to ensuring our products are truly renewable for generations to come. Partnering with RSB will help us to maintain the highest standards of sustainable sourcing as we embark on this journey."

– **Virginie Helias, VP Sustainability, Procter & Gamble**

"GE Aviation is excited to join RSB, which is helping enable the aviation industry's transition to lower-carbon sustainable aviation fuel in place of fossil-based jet fuels. We are committed to a more sustainable future of flight and look forward to working with RSB to support policies that encourage broader adoption of SAF while ensuring fuels are sourced responsibly."

– **Allen Paxson, Vice President of Commercial Program Strategy, GE Aviation**



**GE Aviation**







# RSB member activities in 2024



## Member activities during 2024

### Webinars & Events

A rich programme of online and in-person discussions and events with a global footprint.

### Standard Development

Participate in the ongoing development of our most trusted sustainability framework and learn how it is being applied in practice via certification, programmes, policy engagement, and more.

### Annual Conference

RSB's Annual Conference is a bioeconomy event unlike any other. Join us at CERN in Geneva in Q4 2024 to be inspired, generate action and feel the power of the RSB collaborative network.

### Platforms & Initiatives

Collaborate with RSB members to develop new knowledge and guidelines that will advance the bio-based and circular economy through a range platforms and initiatives which dive deep into the most relevant topics.

# RSB member platforms & initiatives



RSB Members develop, participate and lead groups. Members can propose new groups at any time.

## General Standard Working Group

Experts working together to ensure the continuous and robust development of RSB's Standards.

[Learn more here.](#)

## SAF Policy Platform

Set the agenda and support the engagement of policymakers to promote sustainability knowledge.

[Learn more here.](#)

## Sustainable Airports Platform

Develop and exchange knowledge about the role of airports in the growing SAF economy.

[Learn more here.](#)

## Book and Claim Platform

Learn from 'book and claim' pilots in aviation and shipping and shape the future of the RSB Book & Claim Registry and network.

[Learn more here.](#)

## Sustainable Biomass Policy Platform

Explore policy, financing and practical realities for securing the future of sustainable biomass.

[Learn more here.](#)

## Sustainable Marine Fuels Platform

Dig into the key sustainability topics affecting the transition to sustainable marine fuels, drive engagement with regulators and advocate for a robust and consistent sustainability approach.

[Learn more here.](#)

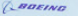
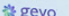
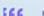

## PTX Working Group

Shape the development of a sustainable approach for new Power-to-X technologies.

[Learn more here.](#)





Headline sponsors:    

# RSB Annual Conference Open Day

15<sup>th</sup> November 2023  
Geneva, Switzerland



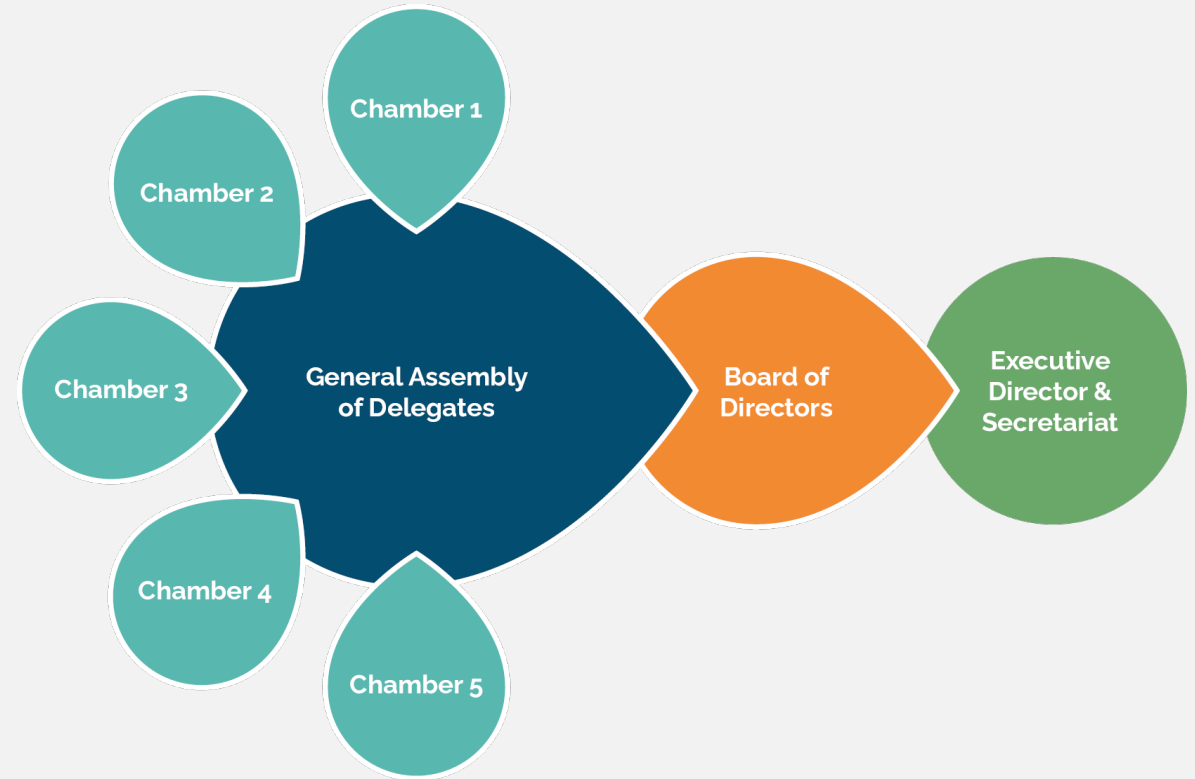


To ensure a balance between business interests and the interests of civil society, RSB members are organised into five Chambers.

The five Chambers elect the Assembly of Delegates who are the governing body of the organisation.

The Assembly of Delegates appoints a Board of Directors to set strategy and provide oversight to the Secretariat.

The Secretariat is responsible for the day-to-day running of the organisation.







Our global membership is highly diverse  
A wide range of organisations across supply chains, regions and industries



## Fees: Public sector & non-profit organisations



### **Important:**

*Please note that from 2024, RSB members from Chamber 3 (Social), Chamber 4 (Environmental) and academic organisations (universities) in Chamber 5 (UN, Governments & Research) are exempt from fees.*

	Annual operating budget (USD)	Membership fee (USD)
Band 1	<15 million	375
Band 2	15 - 30 million	750
Band 3	30 - 150 million	1,500
Band 4	>150 million	3,000

\*Fees are invoiced annually

## Fees: All other organisations



	Revenue (USD)	Membership Fee (USD)
Band 1	<40 million	1,500
Band 2	40 - 200 million	3,000
Band 3	200 million - 2 billion	7,500
Band 4	2 billion – 10 billion	15,000
Band 5	10 billion – 50 billion	20,000
Band 6	>50 billion	30,000

\*Fees are invoiced annually



# Apply for choose RSB membership



Applying for RSB membership is simple:

1. Complete the [Application Form](#) on our website.
2. Write a cover letter. Use the template included in the application form or create your own.
3. Submit any time via the RSB website.

*Applications are reviewed on an ongoing basis by the RSB Board of Directors.*

*The Secretariat will acknowledge receipt of your application and inform you once it has been approved – usually within 10 business days of application barring holiday periods in which the decision may be slightly delayed.*

*Should you have any questions regarding RSB membership or your application, please feel free to contact the Membership and Events Officer, Aléz Odendaal, at [alez.odendaal@rsb.org](mailto:alez.odendaal@rsb.org)*

# Fee Reductions



RSB has a formalised approach to managing fee offsets, waivers and mutual membership. These are applied for concurrently with your membership application initially, and then annually where applicable.



## FEE OFFSETS

Fees can be offset up to 50% by members in the form of fully documented financial contributions to the RSB through flights, hosting meetings, meeting support, hosting site visits, and more.



## FEE WAIVERS

Fee waivers applied for annually, with different requirements for Chambers 1 and 2 (temporary hardship), and non-academic institutions in Chamber 5 (in-kind contributions).



## MUTUAL MEMBERSHIP

Available where appropriate and relevant.



## STARTUPS

Organisations in Bands 1 and 2 in their first three years of operation receive a 70% reduction in their fees as long as they register and participate in at least one RSB platform or initiative each year.

## Further information



### Learn more about RSB membership.



Further information about RSB member community can be found here:  
<https://rsb.org/about-rsb/>



Discuss RSB membership in more detail with RSB's Membership and Events Officer, Aléz Odendaal, at [alez.Odendaal@rsb.org](mailto:alez.Odendaal@rsb.org)



Connect with us on LinkedIn:  
[www.linkedin.com/company/roundtable-on-sustainable-biomaterials](https://www.linkedin.com/company/roundtable-on-sustainable-biomaterials)



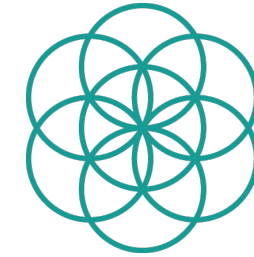
Connect with us on X:  
[www.twitter.com/RSB\\_org](https://www.twitter.com/RSB_org)



If you're ready to apply for RSB membership, start here:  
<https://rsb.org/membership/join-us/>



# Thank you!



# RSB®

