



Type of document: RSB International Standard

Status: Approved for certification

Date: 01 March 2011

Version: 2.1

## Introduction

### **RSB Standard for adaptation to biomass production standards**

**RSB reference code: RSB-STD-15-003**

Published by the Roundtable on Sustainable Biomaterials. This publication or any part thereof may only be reproduced with the written permission of RSB, the publisher. Any reproduction in full or in part of this publication must mention the title and reference code and credit the publisher as the copyright owner.

Contact Detail : RSB - Roundtable on Sustainable Biomaterials  
International Environment House 2  
7-9 Chemin de Balxert  
CH- 1196 Chatelaine (Geneva)  
Switzerland  
web: <http://www.rsb.org>  
email: [info@rsb.org](mailto:info@rsb.org)

The objective of RSB-STD-15-003, *Standard for adaptation to biomass production standards*, is to ensure that the *RSB Principles*, *RSB Criteria* and *RSB Indicators* applicable to feedstock producers can be adapted in order to integrate relevant and compatible *existing biomass production standards* in the scope of certification of conformity with the *RSB Principles & Criteria*. Corresponding adaptations are defined in *RSB Interface Standards*. If the requirements of relevant and compatible *existing biomass production standards* are equivalent to or more stringent than the requirements of the *RSB Principles & Criteria*, these standards can be recognized by *RSB* as technically equivalent.

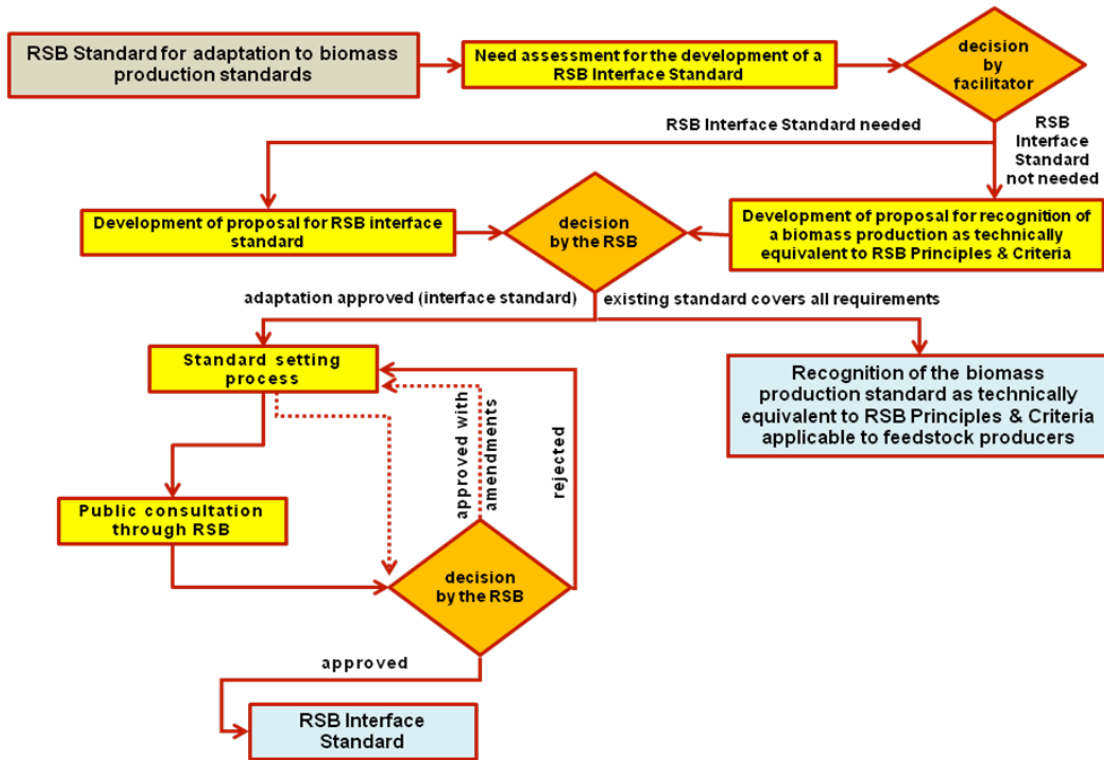


Figure 1: Schematic overview of the *RSB standard for adaptation to biomass production standards*

The objective of these procedures is to ensure that the adaptations will be conducted in efficient, consistent, transparent and standardized manner. In addition to this document all relevant responsibilities will be defined for conducting the adaptation, evaluation and approval process.

The formal decision to develop a new *RSB Interface Standard* or to recognize an *existing biomass production standard* as technically equivalent to *RSB Principles & Criteria* is taken by *RSB*, based on a need assessment and proposal submitted by an entity with a demonstrated interest in the adaptation of the *RSB Principles*, *RSB Criteria* and/or the *RSB Indicators* to the *existing biomass production standard*. Until a *RSB Interface Standard* is approved or an existing biomass production standard recognized as technically equivalent by the *RSB*, the *RSB Principles & Criteria* are applicable.

When the *RSB Principles & Criteria* are amended, appropriate changes to the *RSB Interface Standard* must be made within 12 months.

The users of this standard are legal entities or natural persons proposing the *development of a RSB Interface Standard* or the recognition of technical equivalence of a *existing biomass production standard* and the *RSB*.

## **Table of contents**

- A. Intent of this standard**
- B. Scope of this standard**
- C. Status and effective date**
- D. Note on use of this standard**
- E. References**
- F. Terms and definitions**
- G. Requirements**

### **PART 1 - PROCESS**

- 1. General requirements for the adaptation to existing biomass production standards**
- 2. Process for the development and approval of a RSB Interface Standard**
- 3. Process for the recognition of technical equivalence of existing biomass production standards**

### **PART 2 - CONTENT**

- 4. Reference to scope and conditions**
- 5. Adaptation of RSB Principles, RSB Criteria and RSB Indicators to existing biomass production standards**
  - 5.1. Need assessment for the development of a RSB Interface Standard**
  - 5.2. Adaptation of the RSB Principles, Criteria and Indicators to existing biomass production standards**

## **ANNEX A**

**Requirements for the written proposal for development of a RSB Interface Standard**

## **ANNEX B**

**Requirements for the written proposal for recognition of an existing biomass production standard**

## **A. Intent of this standard**

This standard is intended to ensure that *RSB Principles*, *RSB Criteria* and *RSB Indicators* can be adapted to integrate *existing biomass production standards* in the scope of certification of conformance with *RSB Principles & Criteria*. To this end the standard defines the requirements for the analysis of gaps between *RSB Principles & Criteria* and *existing biomass production standards*, for the development of *RSB Interface Standards* where necessary and for the process from application to decision on *approval by RSB*. The process shall be undertaken under the following conditions:

- i. The *existing biomass production standard* is already used widely and facilitates the certification of substantial quantities of sustainable biomass production.
- ii. Implementation of the *existing biomass production standard* is verified through independent certification systems which are equivalent in systems, rigor and outcome to the RSB certification systems.
- iii. The standard setting and certification processes of the *existing biomass production standard* meets international norms and best practices.

The requirements for the process for the development of the *RSB Interface Standard* listed below are intended to ensure that any entity or person initiating a process for development of a *RSB Regional Standard* is fully able to successfully complete the development process and maintain the resulting *RSB Interface Standard* in the long term. *Constituents* and *stakeholder* who feel that the development of a *RSB Interface Standard* is necessary, but who do not have the ability to initiate such a development process (e.g. for lack of available resources, etc.) should approach the *RSB* for guidance on the possibilities to address their respective concerns with respect to the *RSB Principles & Criteria* and corresponding *indicators*.

## **B. Scope of this standard**

This standard is an international standard and valid worldwide, and specifies the requirements for the adaptation *RSB Principles*, *RSB Criteria* and *RSB Indicators* to *existing biomass production standards* and the development of *RSB Interface Standards* and the recognition of technical equivalence of *existing biomass production standards*.

## **C. Status and effective date**

The version 2.0 of the *RSB Standard for adaptation to biomass production standards* shall be effective on 1 March 2011.

#### D. Note on the use of this standard

All aspects of this standard are considered to be normative, including the intent scope, standard *effective date*, references, terms and definitions, tables and annexes, unless otherwise stated.

Users implementing this standard shall ensure that the intent of this standard is met. To ensure that the intent of this standard is met users shall implement all of the requirements specified in this standard, and any and all additional measures necessary to achieve the intent of this standard.

These procedures are designed to comply with the ISEAL Code of Good Practice for Setting Social and Environmental Standards (2006), and thereby to demonstrate compliance with the applicable requirements of ISO/IEC Guide 59 Code of good practice for standardization, and the WTO Technical Barriers to Trade (TBT) Agreement Annex 3 Code of good practice for the preparation, adoption and application of standards. Excerpts from the TBT Second Triennial Review Annex 4, Principles for the Development of International Standards, Guides and Recommendations with Relation to Articles 2, 5 and Annex 3 of the Agreement have also been drawn upon where appropriate.

#### E. References

ISO Guide 59: Code of Good Practice for Standardization. 1994

ISEAL Code of Good Practice for Setting Social and Environmental Standards. P005 - Public Version 4 - January, 2006

WTO Agreement on Technical Barriers to Trade (TBT) Agreement. Annex 3: Code of good practice for the preparation, adoption and application of standards

WTO TBT Second Triennial Review Annex 4, Principles for the Development of International Standards, Guides and Recommendations with Relation to Articles 2, 5 and Annex 3 of the Agreement

RSB Principles & Criteria, RSB-STD-01-001

#### F. Terms and definitions

The Terms and definitions listed below refer to the use of terms in this *RSB Standard for adaptation to biomass production standards (RSB-STD-15-003)*. While the terms listed below may be used differently in other documents and contexts, the definitions listed below are binding for this document. Terms used in the text of this standard, for which a definition is provided below, are written in italics. A full list of definitions can be found in *RSB-DOC-10-002 RSB Glossary of terms*.

<b>approval by RSB</b>	decision of acceptance duly taken by the RSB.
<b>comments</b>	suggestions, concerns and issues raised by <i>stakeholders</i> during the consultation process.
<b>constituent</b>	see <i>stakeholder</i>

<b>crop</b>	plant used for biomass production and the biomass produced based on this plant.
<b>draft for approval</b>	final draft of an <i>RSB Standard</i> ready for submission to the RSB for decision.
<b>effective date</b>	the date when a standard becomes effective and binding for the RSB, its members and <i>constituents</i> and the RSB Certification Systems and its <i>constituents</i> .
<b>external standards</b>	standards set by another independent standard setting organization.
<b>existing biomass production standards</b>	biomass production standards set by another independent standard setting organization
<b>facilitator</b>	the entity technically, legally, financially and politically accountable, responsible and liable for the transparent, comprehensive and consistent implementation of the proposed process for geographic adaptation of the <i>RSB Criteria</i> and corresponding <i>RSB Indicators</i> and the development of a <i>RSB Crop Specific Standard</i> .
<b>geographic scope</b>	specifies in detail to the political, legal, customary and/or technical social, environmental, cultural, ethical and/or economic conditions which differentiate the <i>particular geographic region</i> from neighboring regions.
<b>particular geographic region</b>	geographic region defined by its particular <i>geographic scope</i> .
<b>prejudice</b>	uneven access to or distribution of social, environmental and/or economic advantages and benefits, of disadvantages and burdens.
<b>public draft</b>	draft of an <i>RSB Standard</i> published for consultation with <i>stakeholders</i> .
<b>Roundtable on Sustainable Biofuels</b>	RSB - Roundtable on Sustainable Biofuels EPFL - Ecole Polytechnique Federale De Lausanne Energy Center Château de Bassenges, Station 5 CH - 1015 Lausanne Switzerland web: <a href="http://rsb.epfl.ch">http://rsb.epfl.ch</a> email: <a href="mailto:rsb@epfl.ch">rsb@epfl.ch</a>
<b>RSB</b>	see Roundtable on Sustainable Biofuels.
<b>RSB certification systems</b>	institutions, <i>constituents</i> , governance mechanisms, processes and relationships which interact systematically to ensure comprehensive and consistent implementation of the <i>RSB Criteria</i> and corresponding <i>RSB Indicators</i> and RSB Standards.
<b>RSB Criterion</b>	objective of performance which is specifically and measurably operationalizing an <i>RSB Principle</i> .

<b>RSB Indicator</b>	outcome specifying a single aspect of performance which is specifically, measurably and achievably operationalizing an RSB Criterion.
<b>RSB member</b>	Legal entity or natural person participating in the Roundtable on Sustainable Biofuels.
<b>RSB Principle</b>	description of the general intent of performance defined by the RSB.
<b>RSB Crop Specific Standard</b>	Standard developed through implementation of this <i>RSB Standard for adaptation to crop specific conditions (RSB-STD-20-003)</i> . Standard resulting from adaptation of <i>RSB Criteria</i> and corresponding <i>RSB Indicators</i> to legal, technical, social, environmental, ethical and/or economic conditions specific to the cultivation of a specific <i>crop</i> .
<b>RSB Interface Standard</b>	standard developed through implementation of this <i>RSB Standard for adaptation to biomass production standards (RSB-STD-20-005)</i> . Standard resulting from adaptation of <i>RSB Principles, Criteria</i> and <i>Indicators</i> to cover the gap between <i>existing biomass production standard</i> and <i>RSB Principles &amp; Criteria</i>
<b>RSB Regional Standard</b>	standard developed through implementation of this RSB Standard for adaptation to geographic conditions. Standard resulting from adaptation of <i>RSB Criteria</i> and corresponding <i>RSB Indicators</i> to political, legal, customary and/or technical social, environmental, cultural, ethical and/or economic conditions in a <i>particular geographic region</i> .
<b>RSB Steering Board</b>	elected governing body of the <i>Roundtable on Sustainable Biofuels</i> consisting of representatives of the <i>RSB members</i> .
<b>stakeholder</b>	persons, groups or organizations who are directly or indirectly affected by or who can affect an activity, but also includes people and organizations who have concerns about the activity, or who might be responsible agents.
<b>systematic effect</b>	an effect which occurs regularly due to a specific set of conditions and not incidentally or randomly.

## G. Requirements

### PART 1: PROCESS

#### 1. General requirements for the adaptation to existing biomass production standards

1. 1. The development of a *RSB Interface Standard* or the recognition of technical equivalence of a *existing biomass production standard* may be proposed to *RSB* if all of the following conditions are fulfilled:
  1. The *existing biomass production standard* can facilitate the certification of substantial quantities of sustainable biomass production;
  2. The *existing biomass production standard* meets the intent of the *RSB Principles & Requirements*;
  3. The *existing biomass production standard* has been developed in accordance with ISO Guide 59;
  4. The standard setting body of the *existing biomass production standard* is governed by a multi-stakeholder board;
  5. The certification system of the biomass production standard is being operated in accordance with ISO Guide 65.
  
1. 2. The process for development of a *RSB Interface Standard* may be initiated by any entity and/or natural person with a demonstrated political, legal, customary and/or technical social, environmental, cultural, ethical and/or economic interest in the *crop* specific adaptation of the *RSB Criteria* and Indicators and the development of the *RSB Interface Standard*.

Note: It is recommended that any entity and/or natural person intending to initiate the development a *RSB Interface Standard* contact the *RSB* for necessary guidance and support.
  
1. 3. If all of the conditions listed under point 1.1 above are fulfilled the *facilitator* shall assess the need for the *development of a RSB Interface Standard* as defined in section 5.1 Need assessment for the development of a *RSB Interface Standard*.
  
1. 4. Based on the outcome of the needs assessment the *facilitator* may propose:
  1. the *development of a RSB Interface Standard* if significant gaps between the requirements of the *existing biomass production standard* and the *RSB Principles & Criteria* have been identified;
  2. the recognition of the *existing biomass production standard* as technically equivalent to the *RSB Principles & Criteria* if the needs assessment demonstrates that the *existing biomass production standard* is equally or more rigorous than the *RSB Principles & Criteria*.



1. 5. Proposals to develop a *RSB Interface Standard* may be presented by any legal entity or natural person with a demonstrated political, legal, customary and/or technical social, environmental, cultural, ethical and/or economic interest in the *development of a RSB Interface Standard (the facilitator)*.
1. 6. Proposals to recognize *existing biomass production standards* as technically equivalent to the *RSB Principles & Criteria* applicable to feedstock producers may be presented by any legal entity or natural person with a demonstrated political, legal, customary and/or technical social, environmental, cultural, ethical and/or economic interest in the recognition of the specific biomass production standard (*the facilitator*).
1. 7. The adaptation to *existing biomass production standards* and all associated processes (e.g. needs assessment, proposal development, proposal decision by *RSB*, standard development, consultation, *approval by RSB*, etc.) and results (e.g. new interface standards, revised standards, recognition of technical equivalence of existing standards, associated documents and guidance, etc.) shall meet the intent of the *RSB Principles & Criteria*.
1. 8. Upon full and unconditional approval of the *RSB Interface Standard* through the *RSB* it shall be effective in conjunction with the *existing biomass production standard* as technically equivalent to the *RSB Principles & Criteria* as of the *effective date*.
1. 9. Upon recognition of the *existing biomass production standard* as technically equivalent to the *RSB Principles & Criteria* applicable to feedstock producers through the *RSB*, valid certificates of compliance with the *existing biomass production standard* shall be accepted as proof of conformity with the *RSB Principles & Criteria* applicable to feedstock producers as of the date of publication of the decision by *RSB*.
1. 10. For participating operators, which have already successfully implemented the *RSB Principles & Criteria* as well as the recognized *existing biomass production standard*, only verification of compliance with the *RSB Interface Standard* is necessary, starting with the *effective date* of the existing biomass recognition and the *RSB Interface Standard*.

## **2. Process for the development and approval of a RSB Interface Standard**

2. 1. The *facilitator* shall submit a written proposal, which meets the requirements specified in Annex A (Requirements for the proposal for the development of a *RSB Interface Standard*).

2. 2. The formal decision to authorize the development of a *RSB Interface Standard* shall be taken by *RSB*.
2. 3. Prior to the decision on the development of a *RSB Interface Standard* the written proposal shall be circulated to the *RSB* and the *RSB members* for review and *comments*.
2. 4. Subject to compliance with the requirements specified in this standard, the decision on adopting or rejecting the proposal to develop a *RSB Interface Standard* shall be formally taken by the *RSB* and be publicly announced, e.g. through publication in the *RSB Newsletter* and on the *RSB website*.
2. 5. The *facilitator* which submitted the proposal for development of a *RSB Interface Standard* will serve as the contact point between the *RSB* and the process for development of a *RSB Interface Standard*. The *facilitator* will be held technically, legally, financially and politically accountable, responsible and liable for the transparent implementation of the proposed process for the development of a *RSB Interface Standard*. The *RSB* shall at its sole discretion accept or reject delegation of the technical, legal, financial and political accountability and responsibility for the transparent implementation of the proposed process to another independent third party.
2. 6. The *facilitator* shall:
  1. enter into an agreement with the *RSB* (e.g. memorandum of understanding, contract, etc.) detailing the technical, legal, financial and political accountabilities, responsibilities and liabilities for the transparent implementation of the proposed process for the development of a *RSB Interface Standard*;
  2. implement the agreement with the *RSB* and the proposed process for the development of a *RSB Interface Standard* as outlined in the proposal approved by the *RSB*;
  3. report to the *RSB* periodically on the progress of the process for the development of a *RSB Interface Standard*;
  4. present to the *RSB* for decision any changes to the process for the development of a *RSB Interface Standard*;
  5. report to the *RSB* successful completion, suspension and/or termination of the process for the development of a *RSB Interface Standard*;
  6. present to the *RSB* for decision the draft for approval of the Interface Standard including a comprehensive documentation of the process of development of the *RSB Interface Standard* and all other relevant documentation.

This documentation shall in particular include detailed reference

1. to comprehensive consultation of the *RSB Interface Standard*,
  2. to any and all experience, knowledge, concerns and inputs provided by relevant and affected *stakeholders* and *constituents*, and
  3. to an updated comprehensive and detailed strategy and program for long term maintenance of the *RSB Interface Standard* with specific reference to the long term viability and stability of the strategy and program for long term maintenance.
2. 7. Prior to the decision of approval of the *RSB Interface Standard* the *RSB* shall publish the draft for approval of the *RSB Interface Standard* for consultation with *RSB member*, *RSB constituents* and other interested parties and collect all *comments* and inputs provided.
2. 8. The *RSB* shall evaluate:
1. the draft of the *RSB Interface Standard* and related documentation for compliance with this standard, comprehensiveness, consistency and feasibility;
  2. the process for developing the *RSB Interface Standard* and related documentation for compliance with this standard;
  3. all inputs and *comments* provided to the proposal for development of a *RSB Interface Standard* and the names and affiliations of the *stakeholders* that provided the input and comment;
  4. the draft of the *RSB Interface Standard* for any conflict or potential conflict with:
    1. the *RSB Principles & Criteria* including their respective *indicators* and the intent of the *RSB Principles & Criteria*,
    2. other *RSB Interface Standards*,
    3. *RSB Interface Standards* to existing Biomass/Biofuels schemes *RSB Regional Standards*,
    4. *RSB Crop Specific Standards*,
    5. other *RSB* standards, and/or
    6. other international standards;
  5. the strategy and program for long term maintenance of the *RSB Interface Standard* including in particular its long term viability and stability.
2. 9. *RSB* shall at its sole discretion either:
- 1 approve the *RSB Interface Standard* and recognize the *existing biomass production standard* in conjunction with the *RSB Interface Standard* as technically equivalent to the *RSB Principles & Criteria* applicable to feedstock producers; or

2 approve the *RSB Interface Standard*, with amendments; or

.

3 reject the *RSB Interface Standard*.

.

2. 10. If *RSB* approves the *RSB Interface Standard* and recognizes the *existing biomass production standard* in conjunction with the *RSB Interface Standard* as technically equivalent to the *RSB Principles & Criteria* applicable to feedstock producers, it shall make the *RSB Interface Standard* publicly available. The *RSB Interface Standard* shall then be binding for and be implemented by all participating operators and *constituents* who have implemented the *existing biomass production standard*.
  
2. 11. If *RSB* approves the *RSB Interface Standard* with minor amendments, it shall advise the *Facilitator* on the amendments required. The *Facilitator* shall implement these amendments directly or submit to the *RSB* a proposal on how the amendments will be addressed.
  
2. 12. If *RSB* rejects the *RSB Interface Standard*, it shall state the reasons for the rejection, and may suggest what steps it considers necessary in order to address its concerns. The *Facilitator* shall consider these reasons and submit to the *RSB* a proposal on how to address these reasons for rejection.
  
2. 13. *RSB* shall keep the following records for each process of development of a *RSB Interface Standard*:
  1. written proposal for development of the *RSB Interface Standard* or recognition of technical equivalence;
  2. copies of all inputs and *comments* provided to the proposal for development of a *RSB Interface Standard* and the names and affiliations of the *stakeholders* that provided the input and comment;
  3. documentation of the approval by the *RSB* of the proposal for development of the *RSB Interface Standard*;
  4. agreement with the *Facilitator*;
  5. copies of all draft standards compiled in the process for development of the *RSB Interface Standard*;
  6. a description of all departures from this standard and all other *RSB* standards;
  7. the draft for approval of the *RSB Interface Standard* and accompanying documentation as it was submitted to the *RSB* for approval;
  8. copies of all inputs and *comments* provided to the draft for approval of the *RSB Interface Standard* and the names and affiliations of the *stakeholders* that provided the input and comment

9. documentation of the decisions by the *RSB*.

**3. Process for the recognition of technical equivalence of existing biomass production standards**

3. 1. The *Facilitator* shall submit a written proposal, which meets the requirements specified in Annex B (Requirements for the proposal for recognition of technical equivalence of *existing biomass production standard* to *RSB Principles & Criteria*).
3. 2. The formal decision to recognize the technical equivalence of an *existing biomass production standard* to *RSB Principles & Criteria* shall be taken by *RSB*.
3. 3. Prior to the decision of technical equivalence the written proposal shall be published by *RSB* for consultation with *RSB members*, *RSB Constituents* and other interested parties and collect all inputs and *comments* provided.
3. 4. The *facilitator* which submitted the proposal for recognition of technical equivalence of an *existing biomass production standard* will serve as the contact point between the *RSB* and the process for development of a *RSB Interface Standard*. The *facilitator* will be held technically, legally, financially and politically accountable, responsible and liable for the comprehensiveness and truthfulness of the results of the need assessment and all other information submitted in the proposal.
3. 5. The *RSB* shall evaluate:
  1. the proposal, need assessment and related documentation for compliance with this standard, comprehensiveness and consistency;
  2. copies of all inputs and *comments* provided to the proposal for recognition of technical equivalence of the *existing biomass production standard* and the names and affiliations of the *stakeholders* that provided the input and comment;
  3. the *existing biomass production standard* for any conflict or potential conflict with
    1. the *RSB Principles & Criteria* including their respective *indicators* and the intent of the *RSB Principles & Criteria*;
    2. other *RSB Interface Standards*;
    3. *RSB Interface Standards* to existing Biomass / Biofuels schemes;
    4. *RSB Regional Standards*;

5. *RSB Crop Specific Standards*;
  6. *other RSB standards*; and/or
  7. *other international standards*.
4. the strategy and program for long term monitoring of technical equivalence of the *existing biomass production standard*, in particular in case revisions of the *RSB Standards* or the *existing biomass production standard*.
3. 6. *RSB* shall at its sole discretion either:
    1. recognize the *existing biomass production standard* as technically equivalent to the *RSB Principles & Criteria* applicable to feedstock producers; or
    2. recognize the *existing biomass production standard* as technically equivalent to the *RSB Principles & Criteria* applicable to feedstock producers, under the condition of development of a *RSB Interface Standard*; or
    3. refuse the recognition of technical equivalence of the *existing biomass production standard* to the *RSB Principles & Criteria* applicable to feedstock producers.
  3. 7. If *RSB* recognizes the *existing biomass production standard* as technically equivalent to the *RSB Principles & Criteria* applicable to feedstock producers, it shall publicly communicate its decision. Certificates of conformity with the *existing biomass production standard* shall be recognized as certification of conformity with the *RSB Principles & Criteria* applicable to feedstock producers.
  3. 8. If *RSB* recognizes the *existing biomass production standard* as technically equivalent to the *RSB Principles & Criteria* applicable to feedstock producers under the conditions of the development of a *RSB Interface Standard*, it shall advise the *Facilitator* on the amendments required. The *Facilitator* can then submit to the *RSB* a proposal for the development of a *RSB Interface Standard* as defined in Annex A.
  3. 9. If *RSB* refuses to recognize the *existing biomass production standard* as technically equivalent to the *RSB Principles & Criteria* applicable to feedstock producers, it shall state the reasons for the rejection, and may suggest what steps it considers necessary in order to address its concerns. The *Facilitator* can consider these reasons and submit to the *RSB* a proposal on how to address these reasons for refusal.

3. 10. *RSB* shall keep the following records for each process of recognition of *existing biomass production standards*:
  1. written proposal for the recognition of the *existing biomass production standard* as technically equivalent to the *RSB Principles & Criteria* applicable to feedstock producers;
  2. copies of all inputs and *comments* provided to the proposal for the recognition of technical equivalence of the *existing biomass production standard* to the *RSB Principles & Criteria* applicable to feedstock producers and the names and affiliations of the *stakeholders* that provided the input and comment;
  3. copies of all responses to *stakeholder* input and comment;
  4. a description of all departures from this standard and all other *RSB* standards;
  5. documentation of the decisions by the *RSB*.

## **PART 2: CONTENT**

### **4. Reference to scope and conditions**

4. 1. The *RSB Interface Standard* shall, in its introduction, make reference to the *existing biomass production standard* to which it relates, including governance structures, development process and verification system.
4. 2. The *RSB Interface Standard* shall specify in its intent that the intent of the *RSB Principles & Criteria* shall be met.
4. 3. The *RSB Interface Standard* shall specify the scope to which it applies.

### **5. Adaptation of RSB Principles, Criteria and Indicators to existing biomass production standards**

#### **5. 1. Needs assessment for the development of a *RSB Interface Standard***

- 5.1.1. The needs assessment for the development of a *RSB Interface Standard* shall be conducted as outlined in Figure 2 and specified in the following binding requirements. The documentation of the need assessment shall be part of the proposal for the development of a *RSB Interface Standard* or for recognition of the technical equivalence of the *existing biomass production standard*.

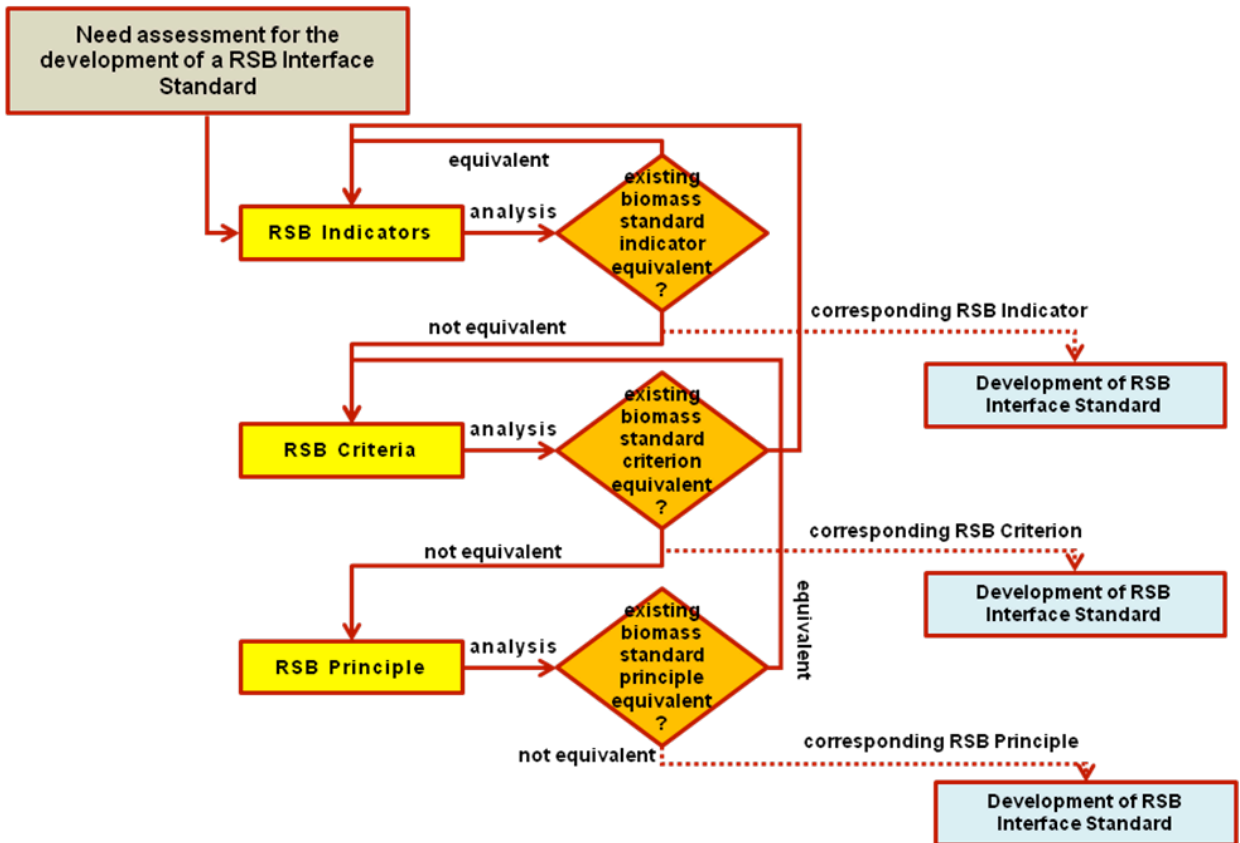


Figure 2: Schematic overview of the assessment of the needs for development of a *RSB Interface Standard*

- 5.1.2. The *Facilitator* shall identify the principle(s), criterion/a and indicator(s) of the *existing biomass production standard* that correspond to each *RSB Principle, Criterion, Indicator* applicable to feedstock producers.
- 5.1.3. The *Facilitator* shall analyze the equivalence of each indicator of the *existing biomass production standard* to the *RSB Indicator*. The analysis of the equivalence shall include a detailed evaluation whether the indicator of the *existing biomass production standard* fully meets the literal meaning and the intent of the *RSB Indicator*.
- 5.1.4. If an indicator of an *existing biomass production standard* is found to not meet the literal meaning and the intent of the *RSB Indicator*:
  1. The corresponding analysis and rationale shall be provided in the documentation of the needs assessment.
  2. The equivalence of the corresponding *RSB Criterion* with the criterion of the *existing biomass production standard* shall be analyzed.
  3. If the criterion of the *existing biomass production standard* is found to be equivalent with the *RSB Criterion*, the *RSB Indicator* which was analyzed shall be introduced in the *RSB Interface Standard*.
- 5.1.5. If a criterion of an *existing biomass production standard* is found to not meet the literal meaning and the intent of the *RSB Criterion*:
  1. The corresponding analysis and rationale shall be provided in the



documentation of the needs assessment.

2. The equivalence of the corresponding *RSB Principle* with the principle of the *existing biomass production standard* shall be analyzed.
3. If the principle of the *existing biomass production standard* is found to be equivalent with the *RSB Principle* the *RSB Criterion* which was analyzed, shall be introduced in the *RSB Interface Standard* together with all corresponding *RSB Indicators*.

5.1.6 If a principle of an *existing biomass production standard* is found to not meet the literal meaning and the intent of the *RSB Principle*:

1. The corresponding analysis and rationale shall be provided in the documentation of the need assessment.
2. The *RSB Principle* which was analyzed, together with all corresponding *RSB Criteria* and all corresponding *RSB Indicators* shall be introduced in the *RSB Interface Standard*.

5.1.7 If a *RSB Principle*, *RSB Criterion* or *RSB Indicator* applicable to feedstock producers is less stringent than the corresponding principle(s), criterion/a or indicator(s) of the *existing biomass production standard*, the gap identified shall be described but no further action is needed.

5.1.8 If a *RSB Principle*, *RSB Criterion* or *RSB Indicator* applicable to feedstock producers is equally stringent than the corresponding principle(s), criterion/a or indicator(s) of the *existing biomass production standard* no further action is needed.

## **5.2. Adaptation of the RSB Principles, Criteria and Indicators to existing biomass production standards**

5.2.1 The adaptation of the *RSB Principles*, *Criterion*, *Indicators* to an *existing biomass production standard* and the development of a *RSB Interface Standard* shall be conducted as outlined in Figure 3 and specified in the following binding requirements.

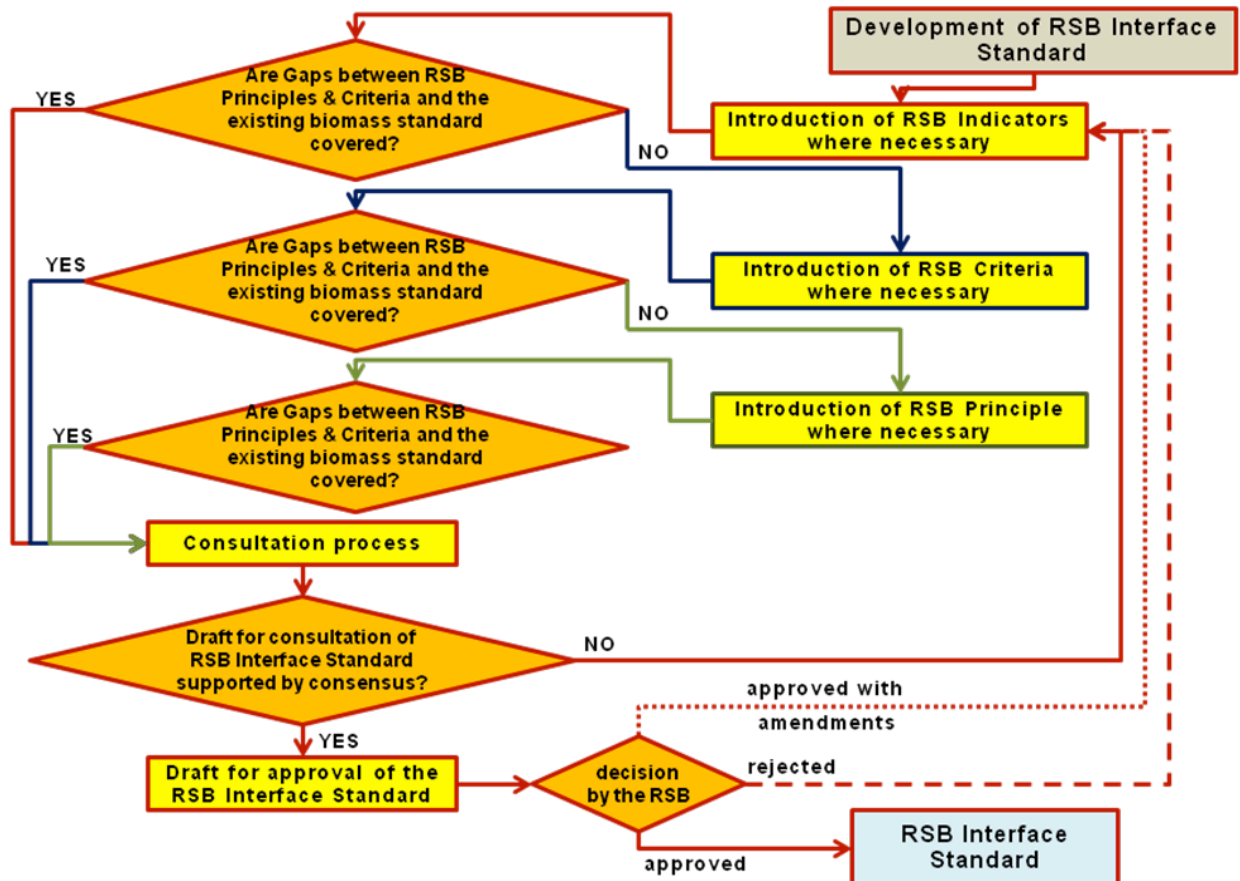


Figure 3: Schematic overview of the adaptation of the *RSB Principles, Criteria and Indicators* and development of the *RSB Interface Standard*

- 5.2.2. The *RSB Interface Standard* shall be limited to those *RSB Principles, RSB Criteria* and *RSB Indicators* that, as documented in the needs assessment, are not fully met by the requirements of the *existing biomass production standard*.
- 5.2.3. If the gap identified is limited to one or more indicators, the corresponding *RSB Indicator(s)* shall be integrated in the *RSB Interface Standard*
- 5.2.4. If the gap identified is limited to one or more criteria, the corresponding *RSB Criteria* and all related *RSB Indicators* shall be integrated in the *RSB Interface Standard*.
- 5.2.5. If the gap identified is concerns one or more principles the corresponding *RSB Principle* and all related *RSB Criteria* as well as all related *RSB Indicators* shall be integrated in the *RSB Interface Standard*.
- 5.2.6. The *RSB Interface Standard* shall include the full wording of all *RSB Principles, RSB Criteria* and *RSB Indicators* necessary to cover the gap identified in the same order as they are prescribed in the *RSB Principles & Criteria* and the *RSB Indicators*.
- 5.2.7. *RSB Principles, Criteria* and/or *Indicators* may include guidance notes to help participating operators, accreditation bodies, certification bodies, auditors or others in using the *RSB Interface Standard*. In all cases the *RSB Interface*

*Standard* shall state that guidance or applicability notes shall not be normative.

- 5.2.8. *RSB Principles, Criteria and/or Indicators* may include references to supplementary standards or documents (e.g. best practice guidelines) developed by external third parties. Such references shall specify clearly whether compliance with any additional requirements is normative.
- 5.2.9. *RSB Principles, Criteria and/or Indicators* shall comply with the latest versions of all approved *RSB Standards*.

## Annex A

### Requirements for the written proposal for development of a RSB Interface Standard

The written proposal for the development of a *RSB Interface Standard* shall:

1. Specify the aims and objectives of the *RSB Interface Standard*, including the benefits related to credibility, integrity and efficiency.
2. Define the *existing biomass production standard* in relation to which the *RSB Interface Standard* is proposed. The scope of the existing standard as well as the scope of the *RSB Interface Standard* shall be outlined.
3. Describe the *existing biomass production standard*, covering at least the following information:
  1. Name of the standard, version, year of development and *effective date*,
  2. Intent and scope of the standard,
  3. Name of the standard setting organization,
  4. Governance structure of the standard setting organization,
  5. Standard setting process, especially *stakeholder* consultation,
  6. Standard maintenance and revision process,
  7. Name of accreditation bodies,
  8. Names of certification bodies,
  9. Certification process,
  10. Number of certificates,
  11. Volume of biomass produced under certificate.
4. Include the documentation of the needs assessment (see section 5.1 Needs assessment for the development of a *RSB Interface Standard*).
5. State that the proposed *RSB Interface Standard* will be developed in compliance with the ISEAL Code of Good Practice for Setting Environmental and Social Standards.
6. Demonstrate that technical expertise and experience required for setting international standards are available to be engaged
7. Detail the process for development of a *RSB Interface Standard*. The detailed description of the process shall include specific results and milestones as well as indicators to measure progress towards achievement of the results and milestones, and how these results, milestones and indicators will address the necessity for the development of a *RSB Interface Standard*.

8. Detail how the *RSB Interface Standard* will be maintained in the long term, if they are formally adopted by the *RSB*. This maintenance in the long term shall include:
  1. monitoring whether the *RSB Interface Standard* achieves the intended objectives,
  2. monitoring the development of the *existing biomass production standard* in terms of relevance, integrity and credibility,
  3. monitoring of the political, legal, customary and/or technical social, environmental, cultural, ethical and/or economic effects of the *RSB Interface Standard* on *stakeholders* and *constituents*,
  4. conduct of periodic revision of the *RSB Interface Standard* in intervals of no more than 5 years,
  5. responding to requests for clarification and additional information (e.g. guidance and advice) related to the implementation of the *RSB Interface Standard*.
9. Detail the governance and management structures which will be formally responsible for implementing the process for the development of the *RSB Interface Standard*.
10. Specify a tentative financial plan for the process for the development of the *RSB Interface Standard*. The tentative financial plan shall include an estimation of the overall costs and an estimation of the costs which will need to be incurred by the *RSB* for accompanying the process.
11. Include in the tentative financial plan tentative/prospective sources **and** commitments for providing the necessary financial resources.

## Annex B

### Requirements for the written proposal for recognition of an existing biomass production standard

The written proposal for the recognition of an *existing biomass production standard* as technically equivalent to the requirements of the *RSB Principles & Criteria* applicable to feedstock producers shall:

1. Specify the aims and objectives of the recognition of the existing standards, including the benefits related to credibility, integrity and efficiency.
2. Describe the *existing biomass production standard*, covering at least the following information
  1. Name of the standard, version, year of development and *effective date*,
  2. Intent and scope of the standard,
  3. Name of the standard setting organization,
  4. Governance structure of the standard setting organization,
  5. Standard setting process, especially *stakeholder* consultation,
  6. Standard maintenance and revision process,
  7. Name of accreditation bodies,
  8. Names of certification bodies,
  9. Certification process,
  10. Number of certificates,
  11. Volume of biomass produced under certificate.
3. Include the documentation of the needs assessment (see section 5.1 Needs assessment for a *RSB Interface Standard*).
4. Detail how the technical equivalence of the *existing biomass production standard* will be monitored in the long term, if it is recognized by *RSB*. This monitoring in the long term shall include:
  1. monitoring the development of the *existing biomass production standard* in terms of relevance, integrity and credibility,
  2. monitoring of the political, legal, customary and/or technical social, environmental, cultural, ethical and/or economic effects of the *existing biomass production standard* on *stakeholders* and *constituents*,
  3. conduct of periodic re-assessment of the existing biomass production standard against the *RSB Principles & Criteria* applicable to feedstock producers in intervals of no more than 5 years.

5. Specify a tentative financial plan for the continuous monitoring of technical equivalence. The tentative financial plan shall include an estimation of the overall costs and an estimation of the costs which will need to be incurred by the *RSB* for accompanying the process.
6. Include in the tentative financial plan tentative/prospective sources **and** commitments for providing the necessary financial resources.