



Type of document: RSB International Standard

Status: Approved for certification

Date: 14 March 2011

Version: 2.1

Introduction

RSB Standard for adaptation to crop specific conditions

RSB reference code: RSB-STD-15-001

Published by the Roundtable on Sustainable Biomaterials. This publication or any part thereof may only be reproduced with the written permission of RSB, the publisher. Any reproduction in full or in part of this publication must mention the title and reference code and credit the publisher as the copyright owner.

Contact Detail : RSB - Roundtable on Sustainable Biomaterials
International Environment House 2
7-9 Chemin de Balxert
CH- 1196 Chatelaine (Geneva)
Switzerland
web: <http://www.rsb.org>
email: info@rsb.org

The objective of RSB-STD-15-001, Standard for adaptation to *crop specific conditions*, is to ensure that the *RSB Criteria* and corresponding *RSB Indicators* can be adapted to *crop specific conditions* in cases where implementation of the *RSB Principles & Criteria* and corresponding *RSB Indicators* would otherwise not be possible or result in a *prejudice* towards participants or in negative environmental, social or economic effects. Corresponding adaptations to the *RSB Criteria* and *RSB Indicators* will be defined in *RSB Crop Specific Standards*. Figure 1 provides a schematic overview of this RSB Standard for adaptation to *crop specific conditions* and the development of *RSB Crop Specific Standards*.

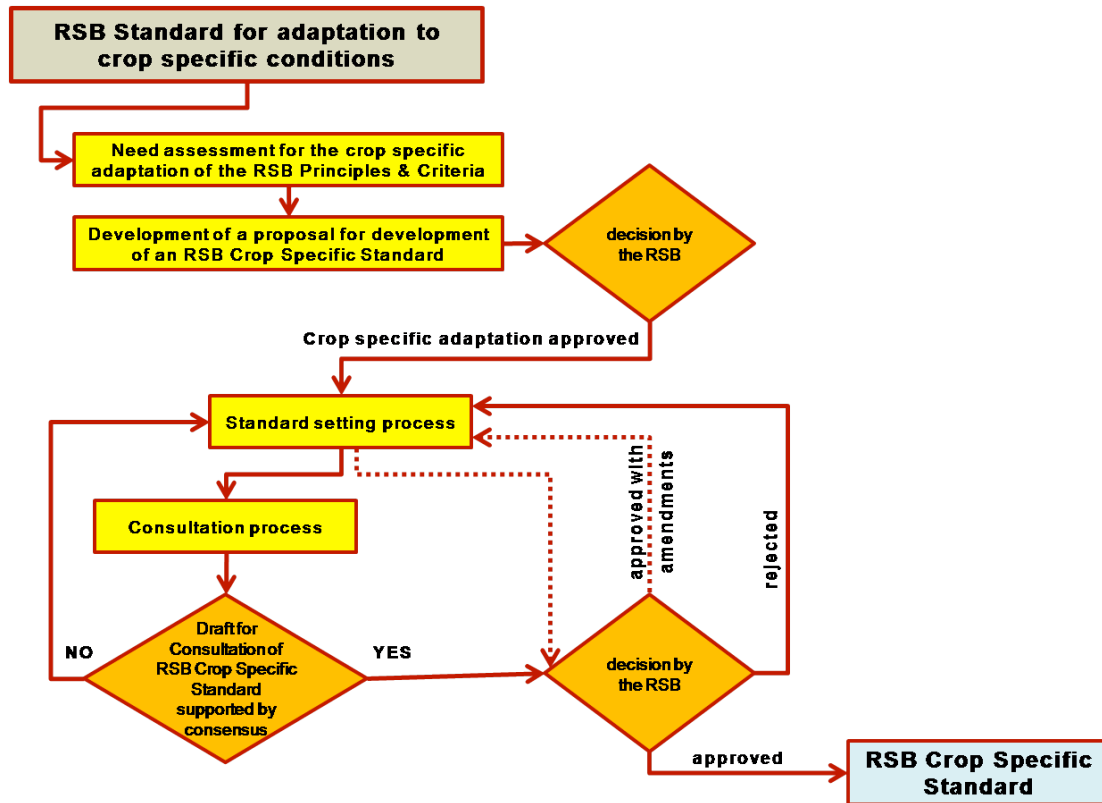


Figure 1: Schematic overview of the RSB Standard for adaptation of the *RSB Criteria* and corresponding *RSB Indicators* to *crop specific conditions* and the development of the *RSB Crop Specific Standard*.

The formal decision to develop a new *RSB Crop Specific Standard* is taken by RSB, based on a needs assessment and proposal elaborated by an entity with a demonstrated interest in the *crop specific adaptation* of the *RSB Criteria* and corresponding *RSB Indicators*. Until a *RSB Crop Specific Standard* is developed and formally approved by the RSB, the international *RSB Principles & Criteria* are applicable.

It is recommended that entities/parties interested in the geographic adaptation of RSB Criteria and corresponding RSB Indicators, and/or other RSB standards, contact the RSB before conducting a needs assessment and elaborating a proposal as specified in this standard.

The requirements in this standard are designed to comply with the ISEAL Code of Good Practice for Setting Social and Environmental Standards (2006), and thereby to demonstrate compliance with the applicable requirements of ISO/IEC Guide 59 Code of good practice for standardization, and the WTO Technical Barriers to Trade (TBT) Agreement Annex 3 Code of good practice for the preparation, adoption and application of standards. Excerpts from the TBT Second Triennial Review Annex 4, Principles for the Development of International Standards, Guides and Recommendations with Relation to Articles 2, 5 and Annex 3 of the Agreement have also been referenced, where appropriate.

Table of contents

- A. Intent of this standard**
- B. Scope of this standard**
- C. Status and effective date**
- D. Note on the use of this standard**
- E. References**
- F. Terms and definitions**
- G. Requirements**
 - PART 1: PROCESS**
 - 1. General requirements for development of a RSB Crop Specific Standard**
 - 2. Process for the development of RSB Crop Specific Standards**
 - PART 2: CONTENT**
 - 3. Reference to crop specific scope and conditions**
 - 4. Adaptation of *RSB Criteria* and Indicators for crop specific conditions**

ANNEX A

Requirements for the written proposal for development of a RSB Crop Specific Standard

A. Intent of this standard

This standard is intended to ensure that international *RSB Criteria* and corresponding *RSB Indicators* can be adapted to political, legal, customary and/or technical social, environmental, cultural, ethical and/or economic conditions specific to the cultivation of a determined *crop*.

Such adaptation shall only be undertaken if compliance with the international *RSB Principles & Criteria* and indicators thereto, and the RSB standards:

- i. do not comprehensively and/or consistently achieve the intent of the *RSB Principles & Criteria* to the cultivation of a determined *crop*;
- ii. resulted or could result in a violation of existing legislation;
- iii. resulted or could result in systematically inconsistent outcomes for different participating operators;
- iv. resulted or could result in systematic negative legal, technical, social, environmental, ethical and/or economic effects in the place of cultivation or its vicinity;
- v. can be facilitated to better address the conditions of specific cultivation methods.

The *crop specific* adaptation of international *RSB Criteria* and corresponding *RSB Indicators* shall:

- i. follow due process as outlined in this standard;
- ii. ensure that experience, knowledge, concerns and inputs, including technical and scientific expertise, of all relevant and affected *constituents* and *stakeholders* are considered transparently, equitably and without prejudice;
- iii. ensure that the resulting *RSB Crop Specific Standards* is supported by a broad consensus of all relevant and affected *constituents* and *stakeholders*;
- iv. be presented to the RSB for decision.

The requirements for the process for the development of the *RSB Crop Specific Standard* listed below are intended to ensure that any entity or person initiating a process for development of a *RSB Crop Specific Standard* is fully able to successfully complete the development process and maintain the resulting *RSB Crop Specific Standard* in the long term. *Constituents* and *stakeholders* of a particular *crop* cultivation, who feel that the development of a *RSB Crop Specific Standard* is necessary, but who do not have the ability to initiate such a development process (e.g. for lack of available resources, etc.) should approach the RSB for guidance on the possibilities to address their respective concerns with respect to the *RSB Principles & Criteria* and corresponding indicators.

B. Scope of this standard

This standard is an international standard and valid worldwide, and specifies the requirements for the adaptation of *RSB Criteria* and corresponding *RSB Indicators* to *crop* specific conditions.

C. Status and effective date

The version 2.0 of the *RSB Standard for adaptation to crop specific conditions* shall be effective on 1 March 2011.

D. Note on use of this standard

All aspects of this standard are considered to be normative, including the intent, scope, standard *effective date*, note on the use of this standard, references, terms and definitions, requirements, and annexes unless otherwise stated. Users implementing this standard shall ensure that the intent of this standard is met. To ensure that the intent of this standard is met users shall implement all of the requirements specified in this standard, and any and all additional measures necessary to achieve the intent of this standard.

E. References

ISO Guide 59: Code of Good Practice for Standardization. 1994

ISEAL Code of Good Practice for Setting Social and Environmental Standards.P005 - Public Version 4 - January, 2006

WTO Agreement on Technical Barriers to Trade (TBT) Agreement. Annex 3: Code of good practice for the preparation, adoption and application of standards.

WTO TBT Second Triennial Review Annex 4, Principles for the Development of International Standards, Guides and Recommendations with Relation to Articles 2, 5 and Annex 3 of the Agreement

RSB Principles & Criteria, RSB-STD-01-001

F. Terms and definitions

The Terms and definitions listed below refer to the use of terms in this *RSB Standard for crop specific adaptation (RSB-STD-15-001)*. While the terms listed below may be used differently in other documents and contexts, the definitions listed below are binding for this document. Terms used in the text of this standard, for which a definition is provided below, are written in italics. A full list of definitions can be found in *RSB-DOC-10-002 RSB Glossary of terms*.

approval by RSB	decision of acceptance duly taken by the RSB.
comments	suggestions, concerns and issues raised by <i>stakeholders</i> during the consultation process.
constituent	see <i>stakeholder</i> .
crop	plant used for biomass production and the biomass produced based on this plant.

draft for approval	final draft of an <i>RSB Standard</i> ready for submission to the RSB for decision.
effective date	the date when a standard becomes effective and binding for the RSB, its members and <i>constituents</i> and the RSB Certification Systems and its <i>constituents</i> .
external standards	standards set by another independent standard setting organization.
facilitator	the x implementation of the proposed process for geographic adaptation of the <i>RSB Criteria</i> and corresponding <i>RSB Indicators</i> and the development of a <i>RSB Crop Specific Standard</i> .
geographic scope	specifies in detail to the political, legal, customary and/or technical social, environmental, cultural, ethical and/or economic conditions which differentiate the <i>particular geographic region</i> from neighboring regions.
particular geographic region	geographic region defined by its particular <i>geographic scope</i> .
prejudice	uneven access to or distribution of social, environmental and/or economic advantages and benefits, of disadvantages and burdens.
public draft	draft of an <i>RSB Standard</i> published for consultation with <i>stakeholders</i> .
Roundtable on Sustainable Biofuels	RSB - Roundtable on Sustainable Biofuels EPFL - Ecole Polytechnique Federale De Lausanne Energy Center Château de Bassenges, Station 5 CH - 1015 Lausanne Switzerland web: http://rsb.epfl.ch email: rsb@epfl.ch
RSB	see Roundtable on Sustainable Biofuels
RSB certification systems	institutions, <i>constituents</i> , governance mechanisms, processes and relationships which interact systematically to ensure comprehensive and consistent implementation of the <i>RSB Criteria</i> and corresponding <i>RSB Indicators</i> and RSB Standards.
RSB Criterion	objective of performance which is specifically and measurably operationalizing an <i>RSB Principle</i> .
RSB Crop Specific Standard	Standard developed through implementation of this <i>RSB Standard for adaptation to crop specific conditions (RSB-STD-20-003)</i> . Standard resulting from adaptation of <i>RSB Criteria</i> and corresponding <i>RSB Indicators</i> to legal, technical, social, environmental, ethical and/or economic conditions specific to the cultivation of a specific <i>crop</i> .

RSB Indicator	outcome specifying a single aspect of performance which is specifically, measurably and achievably operationalizing an RSB Criterion.
RSB member	Legal entity or natural person participating in the Roundtable on Sustainable Biofuels.
RSB Principle	description of the general intent of performance defined by the RSB.
RSB Regional Standard	standard developed through implementation of this RSB Standard for adaptation to geographic conditions. Standard resulting from adaptation of RSB Criteria and corresponding RSB Indicators to political, legal, customary and/or technical social, environmental, cultural, ethical and/or economic conditions in a <i>particular geographic region</i> .
RSB Steering Board	elected governing body of the <i>Roundtable on Sustainable Biofuels</i> consisting of representatives of the <i>RSB members</i> .
stakeholder	persons, groups or organizations who are directly or indirectly affected by or who can affect an activity, but also include people and organizations who have concerns about the activity, or who might be responsible agents.
systematic effect	an effect which occurs regularly due to a specific set of conditions and not incidentally or randomly.

G. Requirements

PART 1: PROCESS

1. General requirements for development of a *RSB Crop Specific Standard*

1. 1. A *RSB Crop Specific Standard* may be necessitated and developed if, due to *crop* specific conditions, the implementation of the *RSB* principles, criteria and/or indicators resulted or would result in one or more of the following effects:
 - i. compliance with the *RSB* principles, criteria and/or indicators does not comprehensively and/or consistently achieve the intent of the *RSB Principles & Criteria*,
 - ii. compliance with the *RSB* principles, criteria and/or indicators resulted or could result in a violation of existing legislation,
 - iii. compliance with the *RSB* principles, criteria and/or indicators resulted or could result systematically in inconsistent outcomes for different participating operators,
 - iv. compliance with the *RSB* principles, criteria and/or indicators resulted or could result systematically in negative, legal, technical social, environmental, cultural, ethical and/or economic impacts in the place of cultivation and its vicinity,
 - v. compliance with the *RSB* principles, criteria and/or indicators can be facilitated to better address the conditions of specific cultivation methods.

1. 2. The process for development of a *RSB Crop Specific Standard* may be initiated by any entity and/or natural person with a demonstrated political, legal, customary and/or technical social, environmental, cultural, ethical and/or economic interest in the *crop* specific adaptation of the *RSB Criteria* and Indicators and the development of the *RSB Crop Specific Standard*.

Note: It is recommended that any entity and/or natural person intending to initiate the development a *RSB Crop Specific Standard* contact the RSB for necessary guidance and support.

1. 3. The development of a *RSB Crop Specific Standard*, and all associated processes (e.g. needs assessment, proposal development, proposal decision by RSB, standard setting, consultation, standard decision by RSB, etc.) and results (e.g. new standards, revised standards, associated documents and guidance, etc.) shall meet the intent of the *RSB Principles & Criteria* and shall not conflict with and/or contradict the *RSB standard* and/or the *RSB certification systems*.

1. 4. Upon full and unconditional approval, the *RSB Crop Specific Standard* shall be effective as of the *effective date*.

1. 5. *RSB members and constituents, and the RSB Certification Systems and its constituents in the particular geographic region, which have already implemented the RSB Principles & Criteria without crop specific adaptation, shall implement the RSB Crop Specific Standard within 1 year of its effective date.*

2. Process for the development of RSB Crop Specific Standards

2. 1. Proposals to develop a *RSB Crop Specific Standard* may be presented by any legal entity or natural person with a demonstrated political, legal, customary and/or technical social, environmental, cultural, ethical and/or economic interest in the *crop* specific adaptation of the *RSB Criteria* and Indicators and the development of the *RSB Crop Specific Standard*.
2. 2. The formal decision to authorize the development of a *RSB Crop Specific Standard* shall be taken by *RSB*.
2. 3. The decision of *RSB* shall be based on a written proposal, which meets the requirements specified in Annex A – **Requirements for the written proposal for development of a *RSB Crop Specific Standard*.**
2. 4. Prior to the decision on the development of a *RSB Crop Specific Standard*, the written proposal shall be circulated to the *RSB* and the *RSB members* for review and *comments*.
2. 5. Subject to compliance with the requirements specified in this standard, the decision on adopting or rejecting the proposal to develop a *RSB Crop Specific Standard* shall be formally taken by the *RSB* and be publicly announced, e.g. through publication in the *RSB Newsletter* and on the *RSB website*.
2. 6. The *Facilitator* shall serve as the contact point between the *RSB* and the development process of a *RSB Crop Specific Standard*. The *Facilitator* shall be held technically, legally, financially and politically accountable, responsible and liable for the transparent, implementation of the process for a *RSB Crop Specific Standard* as proposed to and decided by the *RSB*. The *RSB* shall, at its sole discretion, accept or reject delegation of the technical, legal, financial and political accountability and responsibility for the transparent implementation of the proposed process to another independent third party.
2. 7. The *Facilitator* shall:
 1. enter into an agreement with the *RSB* (e.g. memorandum of understanding, contract, etc.) detailing the technical, legal, financial and political accountabilities, responsibilities and liabilities for the transparent

- implementation of the proposed process for the development of a *RSB Crop Specific Standard*;
 2. implement the agreement with the *RSB* and the proposed process for the development of an *RSB Crop Specific Standard* as outlined in the proposal approved by the *RSB*;
 3. report to the *RSB* periodically on the progress of the process the development of the *RSB Crop Specific Standard*;
 4. present to the *RSB* for decision, any changes to the process for the development of the *RSB Crop Specific Standard*;
 5. report to the *RSB* upon the successful completion, suspension and/or termination of the process for the development of the *RSB Crop Specific Standard*;
 6. present to the *RSB* for decision the *draft for approval by RSB* of the *RSB Crop Specific Standard* including a comprehensive documentation of the process for the development of the *RSB Crop Specific Standard* and all other relevant documentation. This documentation shall, in particular, include detailed reference:
 1. to comprehensive consultation of the *RSB Crop Specific Standards*, and to any and all experience, knowledge, concerns and inputs provided by relevant and affected *stakeholders* and *constituents*, and
 2. on how these were considered transparently, equitably and without prejudice.
 3. to an updated comprehensive and detailed strategy and program for long term maintenance of the *RSB Crop Specific Standard* with specific reference to the long term viability and stability of the strategy and program for long term maintenance.
2. 8. The *RSB* shall evaluate:
1. the *draft for approval* of the *RSB Crop Specific Standard* and related documentation for compliance with this standard, comprehensiveness, consistency and feasibility;
 2. the process for developing the *RSB Crop Specific Standard* and related documentation for compliance with this standard;
 3. the *draft for approval* of the *RSB Crop Specific Standard* for any conflict or potential conflict with:
 1. the *RSB Principles & Criteria* including their respective indicators and the intent of the *RSB Principles & Criteria*,
 2. other *RSB Crop Specific Standards*;
 3. *RSB Regional Standards*,
 4. *RSB Standards* for adaption to existing Biomass / Biofuels standards,
 5. *RSB Standards* for adaption to existing Biomass / Biofuels schemes,
 6. other *RSB standards*, and/or

7. other international standards;
 4. the strategy and program for long term maintenance of the *RSB Crop Specific Standard* including in particular its long term viability and stability.
2. 9. RSB shall, at its sole discretion, either:
 1. approve the *RSB Crop Specific Standard*; or
 2. approve the *RSB Crop Specific Standard*, with amendments; or
 3. reject the *RSB Crop Specific Standard*.
 2. 10. If RSB approves the *RSB Crop Specific Standard*, it shall make the *RSB Crop Specific Standard* publicly available. The *RSB Crop Specific Standard* shall then be binding for and be implemented by all participating operators and *constituents* cultivating and/or processing the *crop* as specified in its intent and scope.
 2. 11. If RSB approves the *RSB Crop Specific Standard* with minor amendments, it shall advise the *Facilitator* on the amendments required. The *Facilitator* shall implement these amendments directly or submit to the RSB a proposal on how the amendments will be addressed.
 2. 12. If RSB rejects the *RSB Crop Specific Standard*, it shall state the reasons for the rejection, and may suggest what steps it considers necessary in order to address its concerns. The *Facilitator* shall consider these reasons and submit to the RSB a proposal on how to address these reasons for rejection.
 2. 13. RSB shall keep the following records for each *RSB Crop Specific Standard* developed:
 1. written proposal for the development of the *RSB Crop Specific Standard*;
 2. documentation of the *approval* by the RSB of the proposal for the development of the *RSB Crop Specific Standard*;
 3. agreement with the *Facilitator*;
 4. names and affiliations of members of the consultation process, and of all other *stakeholders* and *constituents* that were approached, contacted, invited, engaged, consulted in the process for the development of the *RSB Crop Specific Standard*;
 5. copies of all inputs and *comments* provided to the process for the development of the *RSB Crop Specific Standard* and the names and affiliations of the *stakeholders* that provided the input and comment;
 6. copies of all responses to *stakeholder* input and comment;

7. copies of all draft standards compiled in the process for the development of the *RSB Crop Specific Standard*;
8. a description of all departures from this standard and all other RSB standards;
9. the *draft for approval* of the *RSB Crop Specific Standard* and accompanying documentation as it was submitted to the RSB for *approval*;
10. documentation of the decisions by the RSB.

PART 2: CONTENT

3. Reference to crop specific scope and conditions

3. 1. The Crop Specific Standard shall, in its introduction, describe the *crop* that makes the development of the *RSB Crop Specific Standard* necessary. The scope of the standard shall specify the trade name(s) and botanical name(s) of the plant or family of plants used for the production of biomass, and the specific legal, technical, social, environmental, biological ethical and/or economic conditions with regard to their cultivation method.
3. 2. The *RSB Crop Specific Standard* shall specify in its intent that the intent of the *RSB Principles & Criteria* shall be met.
3. 3. The *RSB Crop Specific Standard* shall specify the scope to which it applies.

4. Adaptation of RSB Criteria and Indicators for crop specific conditions

4. 1. Needs assessment for the development of the RSB Crop Specific Standard

4. 1. 1. The needs assessment for the development of the *RSB Crop Specific Standard* shall be conducted as outlined in Figure 2 and specified in the following requirements of this standard. The documentation of the needs assessment shall be part of the proposal for the development of a *RSB Crop Specific Standard*.

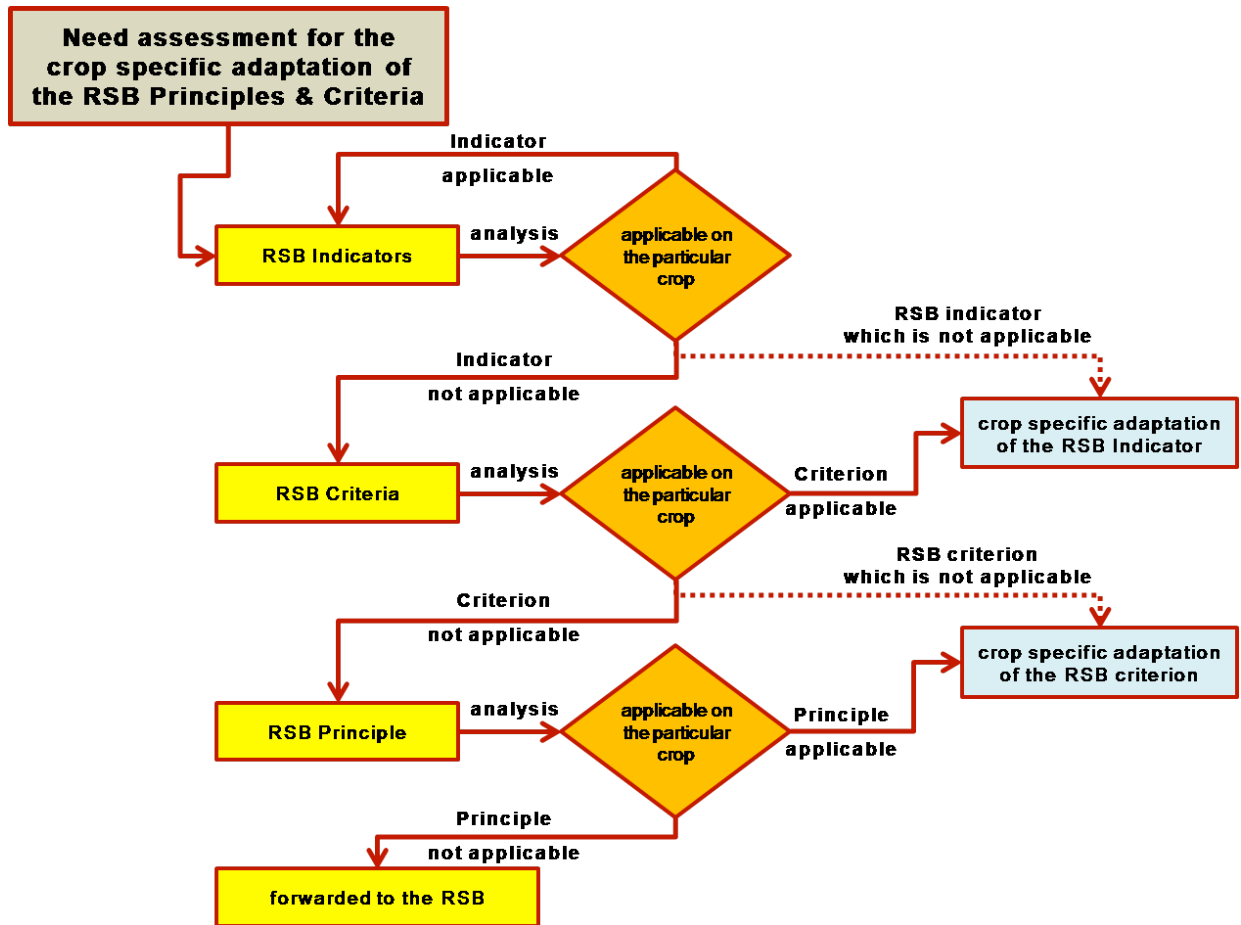


Figure 2: Schematic overview of the assessment of the needs for *crop* specific adaptation of the *RSB Criteria* and corresponding *RSB Indicators* and development of a *RSB Crop Specific Standard*

4. 1. 2. The *Facilitator* shall analyze the applicability of each *RSB Indicator* to the *crop* specific conditions. Analysis of the applicability of each *RSB Indicator* shall include a detailed evaluation whether implementation of the *RSB Principles, Criteria and/or Indicators* leads to one or more of the following results listed in 1.1, points i.-v.
4. 1. 3. If an *RSB Indicator* is found to lead to one or more of the results listed in 1.1, points i.-v.,
 1. the corresponding analysis and rationale shall be provided in the documentation of the needs assessment,
 2. the applicability of the corresponding *RSB Criterion* shall be analyzed,
 3. If the corresponding *RSB Criterion* is found to be applicable and to not lead to one or more of the results listed in 1.1, points i.-v., the *RSB Indicator*, which was analyzed, shall be adapted to the *crop* specific conditions.
 4. the adaptation of the *RSB Indicator* analyzed shall ensure that the intent of the corresponding *RSB Criterion* is met.

4. 1. 4. If an *RSB Criterion* is found not to be applicable and to lead to one or more of the results listed in 1.1, points i.-v.,
 1. the corresponding analysis and rationale shall be provided in the documentation of the needs assessment,
 2. the applicability of the corresponding *RSB Principle* shall be analyzed,
 3. if the corresponding *RSB Principle* is found to be applicable and to not lead to one or more of the results listed in 1.1, points i.-v., the *RSB Criterion* which was analyzed shall be adapted to the *crop* specific conditions,
 4. the adaptation of the *RSB Criterion* which was analyzed shall ensure that the intent of the corresponding *RSB Principle* is met.
4. 1. 5. If an *RSB Principle* is found to not be applicable and to lead to one or more of the results listed in 1.1, points i.-v., the full documentation of the analysis shall be forwarded to the RSB for consideration.

4. 2. Crop specific adaptation of the RSB Indicators and RSB Criteria identified

4. 2. 1. The *crop* specific adaptation of the *RSB Indicators* and *RSB Criteria* and the development of a *RSB Crop Specific Standard* shall be conducted as outlined in Figure 3 and specified in the following binding requirements.

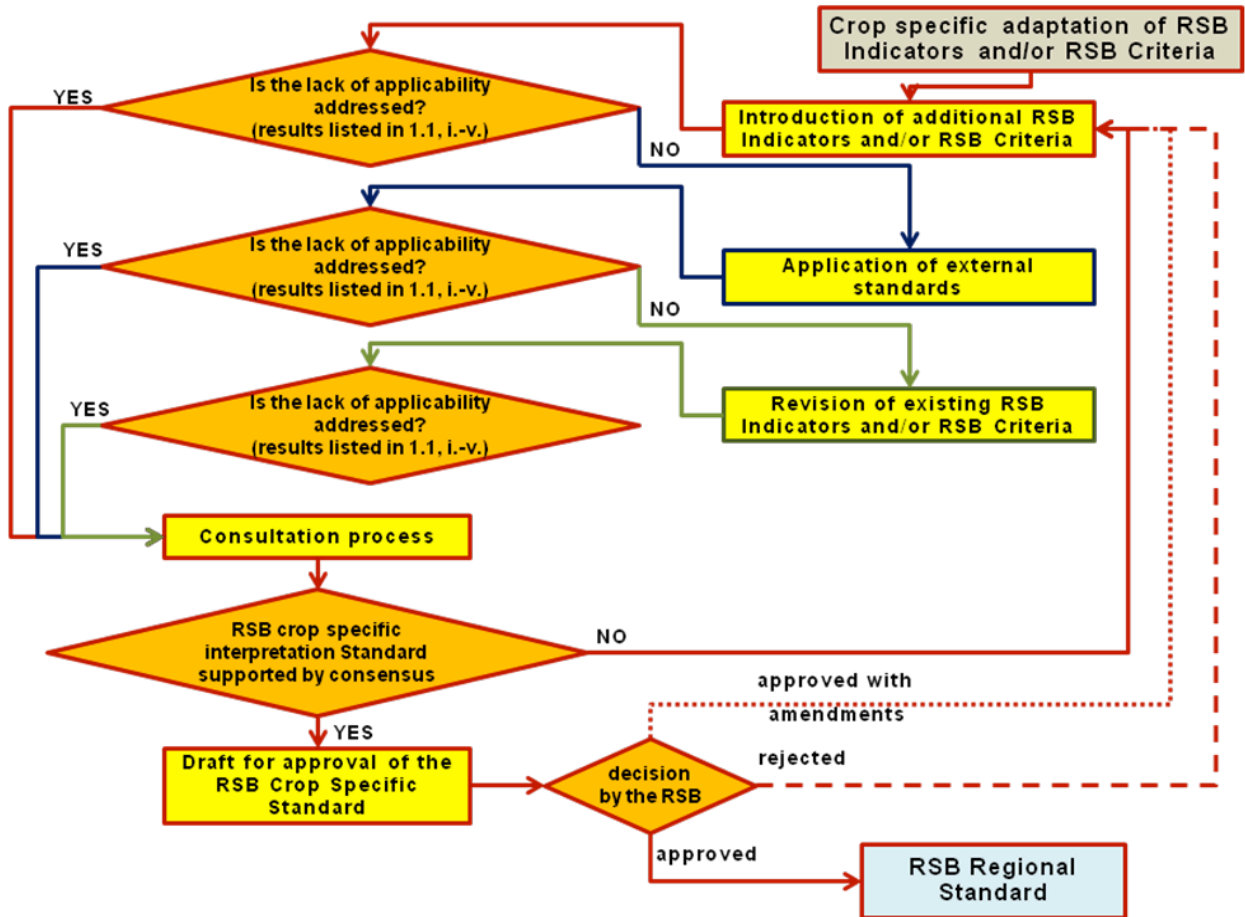


Figure 3: Schematic overview of the *crop* specific adaptation of the *RSB Indicators* and *RSB Criteria* and development of the *RSB Crop Specific Standard*

4. 2. 2. Any adaptation of and changes to *RSB Indicators* and/or *RSB Criteria* shall be limited to those *RSB Indicators* and *RSB Criteria* documented in the needs assessment to be not applicable and to lead to one or more of the results listed in 1.1, points i.-v.
4. 2. 3. If the lack of applicability (results listed in 1.1, points i.-v.) can be addressed through the introduction of additional *RSB Indicators* and/or *RSB Criteria*, the process for geographic adaptation shall identify and introduce such additional *RSB Indicators* to meet the intent of the corresponding *RSB Criterion* and/or such additional *RSB Criteria* to meet the intent of the corresponding *RSB Principle*.
4. 2. 4. If the lack of applicability (results listed in 1.1, points i.-v.) cannot be addressed through the introduction of additional *RSB Indicators* and/or *RSB Criteria*, but through the application of *external standards*, the process for geographic adaptation shall identify and specify such *external*

standards to meet the intent of the corresponding *RSB Criterion* and/or the corresponding *RSB Principle*.

4. 2. 5. If the lack of applicability (results listed in 1.1, points i.-v.) cannot be addressed through the introduction of additional *RSB Indicators* and/or *RSB Criteria*, or through the application of *external standards*, the process for geographic adaptation shall revise the *RSB Indicator* to meet the intent of the corresponding *RSB Criterion* and/or the *RSB Criterion* to meet the intent of the corresponding *RSB Principle*.
4. 2. 6. The requirements listed in PART2, section 4.2.3. – 4.2.5. shall be repeatedly applied for each of the *RSB Indicators* and *RSB Criteria* identified as not applicable in the needs assessment.
4. 2. 7. The Crop Specific Standard shall include the wording of all *RSB Principles*, *RSB Criteria* and *RSB Indicators*, including those which were adapted and those which remained unchanged in the same order as they are prescribed in the *RSB Principles & Criteria* and the corresponding *RSB Indicators*.
4. 2. 8. New or adapted *RSB Criteria* and/or *RSB Indicators*, and/or *external standards* specified shall not be defined in terms of design or descriptive characteristics, and shall not favor a particular technology or patented item.
4. 2. 9. New or adapted *RSB Criteria* and/or *RSB Indicators*, and/or *external standards* specified shall only include elements that contribute to the achievement of the objective of the corresponding *RSB Principle* or *RSB Criterion*.
4. 2. 10. New or adapted *RSB Criteria*, and/or *external standards* specified shall specify objectives of practice and performance that are specific and measurable during an evaluation.
4. 2. 11. New or adapted *RSB Indicator*, and/or *external standards* specified shall specify outcomes or levels (i.e. thresholds) of performance that are specific and measurable during an evaluation.
4. 2. 12. The meaning of the *RSB Indicators* and the level of performance required to comply with the *RSB Indicators* shall be clear to the user.
4. 2. 13. Each *RSB Indicator* shall refer to a single aspect of performance to be evaluated. An *RSB Indicator* which includes more than one aspect to be evaluated shall list these aspects separately as sub-divisions of the *RSB Indicator*.
4. 2. 14. *RSB Criteria* and *RSB Indicators* shall be free from subjective elements. The use of such phrases as “ordinarily”, “substantial”, “proactive”, “appropriate to”, “minimize”, “wherever possible”, “thorough” or “best available” or similar terms requiring subjective judgment shall be avoided.
4. 2. 15. The Crop Specific Standard shall be written using a clear and consistent vocabulary which uses or permits unambiguous translation of the following English words in accordance with the specific meanings given below:
 1. the words ‘shall’ indicates a binding requirement of the standard, and the words ‘shall not’ to indicate a binding prohibition. A binding requirement must be complied with to achieve compliance with the

standard.

2. the words 'should' or 'should not' indicate a recommendation, rather than a requirement or prohibition. If a recommendation is not complied with, the participating operator and the certification body evaluating the participating operator shall demonstrate that implementation of the indicator was not necessary to achieve the intent of the criterion.
 3. the words 'may' or 'may not' indicate an optional or a permitted course of action, within the limits of the standard.
 4. the words 'need not' indicate that a specified course of action is not a requirement.
4. 2. 16. The new or adapted *RSB Criteria* and/or *RSB Indicators* shall include examples of means of verification for every *RSB Indicator*.
 4. 2. 17. The new or adapted *RSB Criteria* and/or *RSB Indicators* shall include clear supplementary information as necessary to identify any categories of users to whom special provisions are applicable (e.g. small operators, large operators, vertically integrated operations, communities, indigenous peoples, etc).
 4. 2. 18. The new or adapted *RSB Criteria* and/or *RSB Indicators* may include guidance notes to help participating operators, accreditation bodies, certification bodies, auditors or others in using the *RSB Crop Specific Standard*. In all cases the *RSB Crop Specific Standard* shall state that guidance or applicability notes shall not be normative.
 4. 2. 19. The new or adapted *RSB Criteria* and/or *RSB Indicators* may include references to supplementary standards or documents (e.g. best practice guidelines) developed by external third parties. Such references shall specify clearly whether compliance with any additional requirements is normative.
 4. 2. 20. The new or adapted *RSB Criteria* and/or *RSB Indicators* shall comply with the latest versions of all approved RSB Standards.

ANNEX A

Requirements for the written proposal for development of a RSB Crop Specific Standard

Binding requirements

The written proposal for the development of a *RSB Crop Specific Standard* shall:

1. Specify the aims and objectives of the *RSB Crop Specific Standard*, including the benefits related to credibility, integrity and efficiency.
2. Define the *Crop* for which the *RSB Crop Specific Standard* is proposed. The scope shall refer in detail to the *crop* used for biomass production.
3. Describe the specific legal, technical, social, environmental, biological, cultural, ethical and/or economic conditions of cultivation of the particular *crop* that necessitate the development of a *RSB Crop Specific Standard*.
4. Include the documentation of the needs assessment (see section 4.1 Need assessment for the development of the RSB Regional Standard).
5. State that the proposed RSB Regional Standard will be developed in compliance with the ISEAL Code of Good Practice for Setting Environmental and Social Standards.
6. Demonstrate that technical expertise and experience required for setting international standards and political expertise and experience required for managing multi-*stakeholder* standard setting processes are available to be engaged.
7. Detail the process for the development of a *RSB Crop Specific Standard*. The detailed description of the process shall include specific results and milestones as well as indicators to measure progress towards achievement of the results and milestones, and how these results, milestones and indicators will address the necessity for the development of a *RSB Crop Specific Standard*.
8. Identify and map the *stakeholder* and *constituent* groups that will be affected by the development of a *RSB Crop Specific Standard* and the potential political, legal, customary and/or technical social, environmental, cultural, ethical and/or economic impacts upon each of these *stakeholder* groups. Mapping *stakeholder* and *constituent* groups shall include the development of objective criteria and pro-active procedures for identification of relevant and affected *stakeholders* and *constituents*. Pro-active procedures shall include dedicated activities to reach out to and engage with relevant and affected *stakeholders* and *constituents* and to overcome political, legal, customary and/or technical social, environmental, cultural, ethical and/or economic barriers to equitable participation (e.g. language constraint, lack of resources, etc.) which *stakeholder* and *constituent* groups may be facing in the process for the development of a *RSB Crop Specific Standard*.
9. Detail that all relevant *stakeholders* and *constituents* in the particular region are informed about and support the process for the development of a *RSB Crop Specific Standard*.
10. Ensure that the experience, knowledge, concerns and inputs including technical and scientific expertise of all relevant and affected *constituents* and *stakeholders* are considered transparently, equitably and without prejudice in the proposed process for the development of the *RSB Crop Specific Standard*. The process shall include detailed, comprehensive, consistent and transparent pilot-testing of the the

development of the *RSB Crop Specific Standard*.

11. Detail how the process shall take decisions directly related to the *crop* specific adaptation of the *RSB Principles*, criteria and/or indicators and the content of the *RSB Crop Specific Standard* by consensus of all relevant *stakeholders* and *constituents*.
12. Detail how the *RSB Crop Specific Standard* will be maintained in the long term, if it is formally adopted by the RSB. This maintenance in the long term shall include:
 1. monitoring whether the Crop Specific Standard achieves its intended objectives;
 2. monitoring whether the Crop Specific Standard overcomes the factors which necessitated its development;
 3. monitoring of the political, legal, customary and/or technical social, environmental, cultural, ethical and/or economic effects of the Crop Specific Standard on *stakeholders* and *constituents* of the *crop* cultivation;
 4. conduct of periodic revision of the *RSB Crop Specific Standard* in intervals of no more than 5 years;
 5. responding to requests for clarification and additional information (e.g. guidance and advice) related to the implementation of the *RSB Crop Specific Standard*;
13. Detail the governance and management structures which will be formally responsible for implementing the process for the development of the *RSB Crop Specific Standard*.
14. Specify a tentative financial plan for the process for the development of the *RSB Crop Specific Standard*. The tentative financial plan shall include an estimation of the overall costs and an estimation of the costs which will need to be incurred by the RSB for accompanying the process.
15. Include in the tentative financial plan as well as tentative/prospective sources **and** commitments for providing the necessary financial resources.

Guidance

1. With reference to requirements 8.–11.:
 1. The *Facilitator* should set up a consultation process for each *RSB Crop Specific Standard*.
 2. The consultation process should ensure that all *stakeholders* and *constituents* who may be affected by the implementation of a specific *RSB Crop Specific Standard* have the opportunity to comment, formally, during the process of development of the standard.
 3. Membership in a consultation process should be open to all relevant *stakeholders* and *constituent* in the particular region. The number of members should not be limited.
 4. The *Facilitator* should ensure that the consultation process includes individuals and/or organizations reflecting the full range of *stakeholders* affected by the *RSB Crop Specific Standard*.
 5. The *Facilitator* should make special provision to ensure that representatives of any marginalized groups that may be affected by the *RSB Crop Specific Standard* represented in the consultation process, and/or ensure that specific provisions are made to ensure that the potential impacts of the *RSB Crop*

Specific Standard on such groups have been explicitly identified and taken into account.

6. The *Facilitator* should ensure that all *RSB members* and *constituents* involved in the *RSB Certification Systems* are invited to participate in the consultation process.
 7. The *Facilitator* should ensure that *RSB members*, *constituents* involved in the *RSB Certification Systems*, and members in the consultation process suggest individuals and organizations that should be approached, invited and engaged to participate in the consultation process.
 8. A report of all *comments* received from *stakeholders* and *constituents* should be circulated to the consultation process. The report should be publicly available upon request. The report should include a summary of the issues raised, a general response to the *comments*, an indication of how they have been taken into account in the subsequent *public draft* standard and a copy of all *comments* received in the consultation, including identification of each *stakeholder* who contributed the comment as an Annex.
-
2. With reference to requirement 11., consensus is defined as “absence of sustained opposition from any major *stakeholder* group involved in the process”.